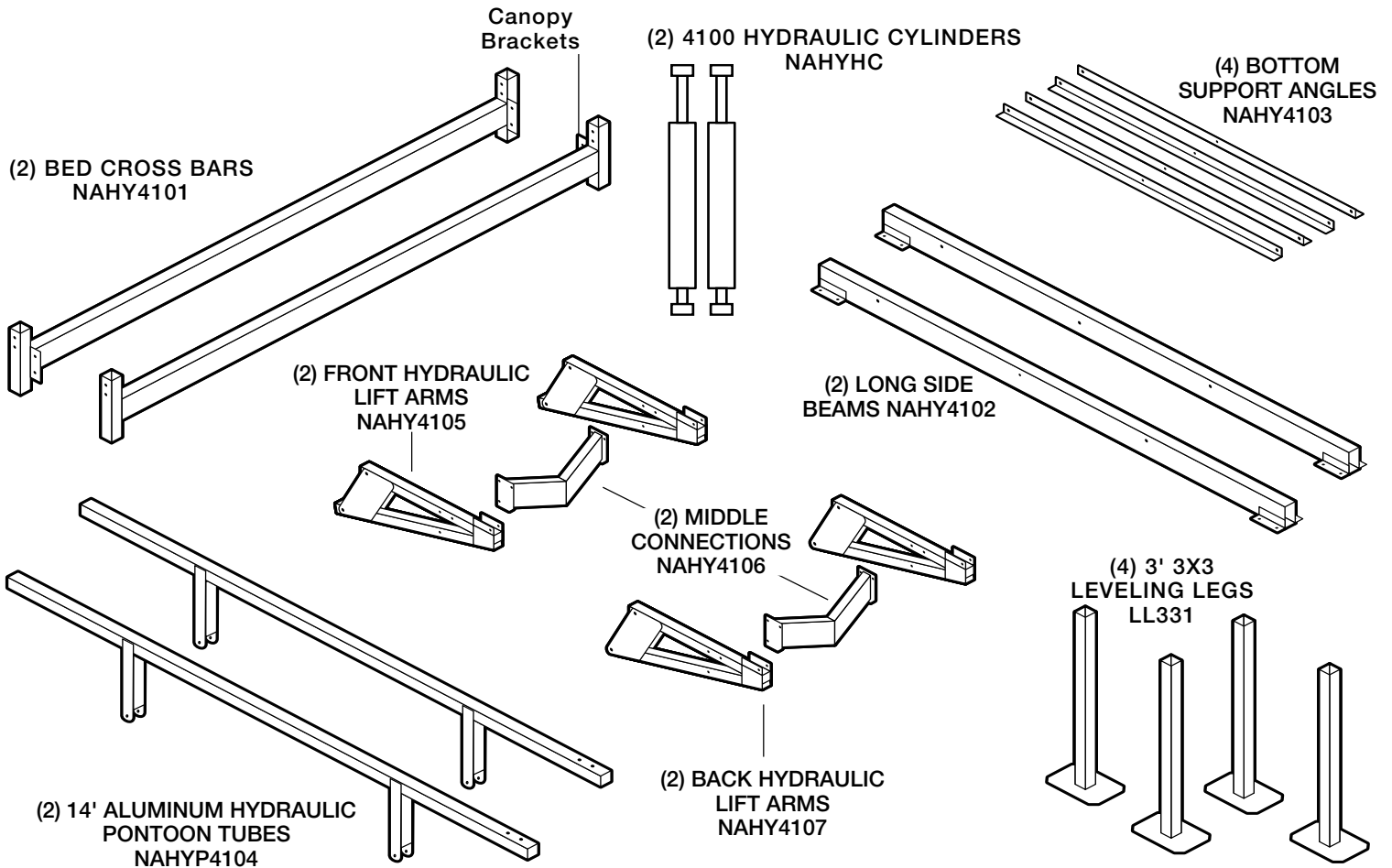
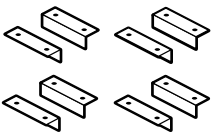

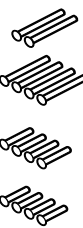
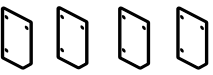

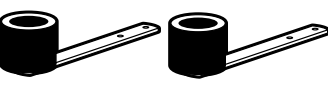
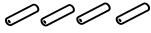




# 4100lbs. HYDRAULIC PONTOON LIFT

## PARTS LIST (L0HP41110)

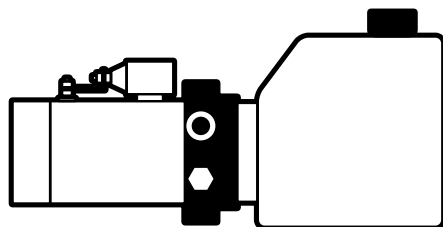
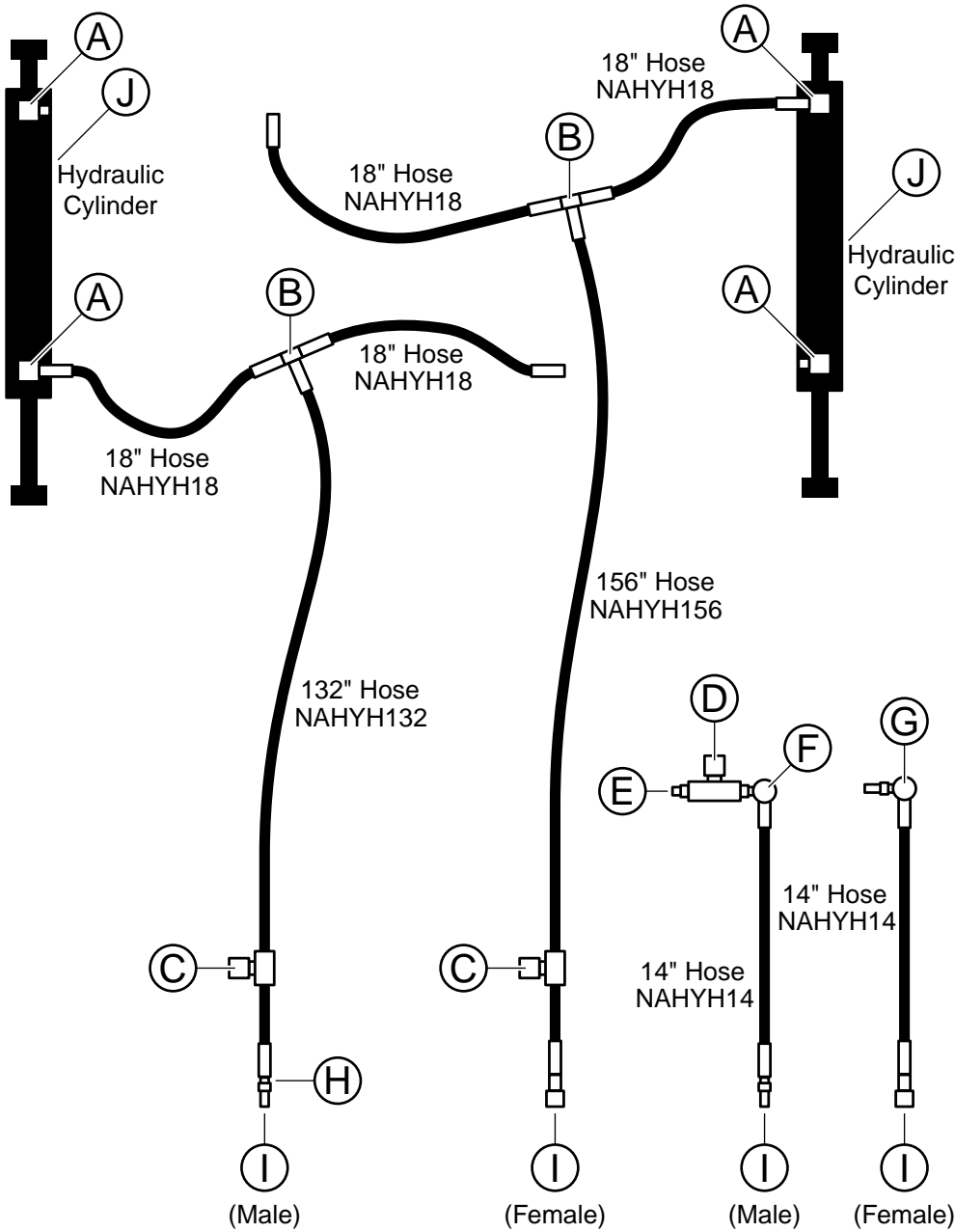


 <p>(8) BED MOUNT ANGLES NAHY4108</p>	 <p>(2) CYLINDER MOUNTING BRACKETS NAHY4109</p>	 <p>(2) 3/4" x 7-1/2" Pivot Pins - NP34712            (4) 3/4" x 7-1/4" Pivot Pins - NP34714            (4) 3/4" x 4-1/2" Pivot Pins - NP34412            (4) 3/4" x 4-1/8" Pivot Pins - NP34418</p>	<p><b>HARDWARE BAG - NAHY4120</b></p> <p>Pivot Pins shown at left</p> <p>(4) 3" x 3" Rubber Caps - DIRC3SQ            (4) 3/8" x 4" Leg Pin with Clip - LLP4            (12) 3/8" x 3" Hex Bolts - NB383G            (2) 3/8" x 4" Hex Bolts - NB384G            (4) 3/8" x 4-1/2" Hex Bolts - NB38412G            (16) 3/8" x 7" Carriage Bolts - NB387C            (4) 3/8" X 4" Carriage Bolts - NB384C            (38) 3/8" Nuts - NN38S            (16) 3/8" Washers - NW38FL            (30) 3/4" S.A.E. Washers - NW34S            (14) 1/4" x 2" Cotter Pins - NCP</p>
 <p>(4) 6" X 7" REINFORCEMENTS V-PLATE NAHY4110</p>	 <p>(4) 3/4" ID 2" OD 1" NYLON SPACERS NAHY4112</p>	 <p>(2) DELUXE GUIDE ROLLERS LFLCGA4</p>	
	 <p>(4) 3-1/4" ANGLE SPACERS NAHY4111</p>		

"Quality Since 1971"

HEWITT MACHINE & MFG, INC. Box 111 Nicollet, MN 56074 (507) 225-3421

www.hewitt-roll-a-dock.com e-mail: info@hewitt-roll-a-dock.com



(2) One Gallon Biodegradable Lubriplate Fluid Bottles FMO-350-AW

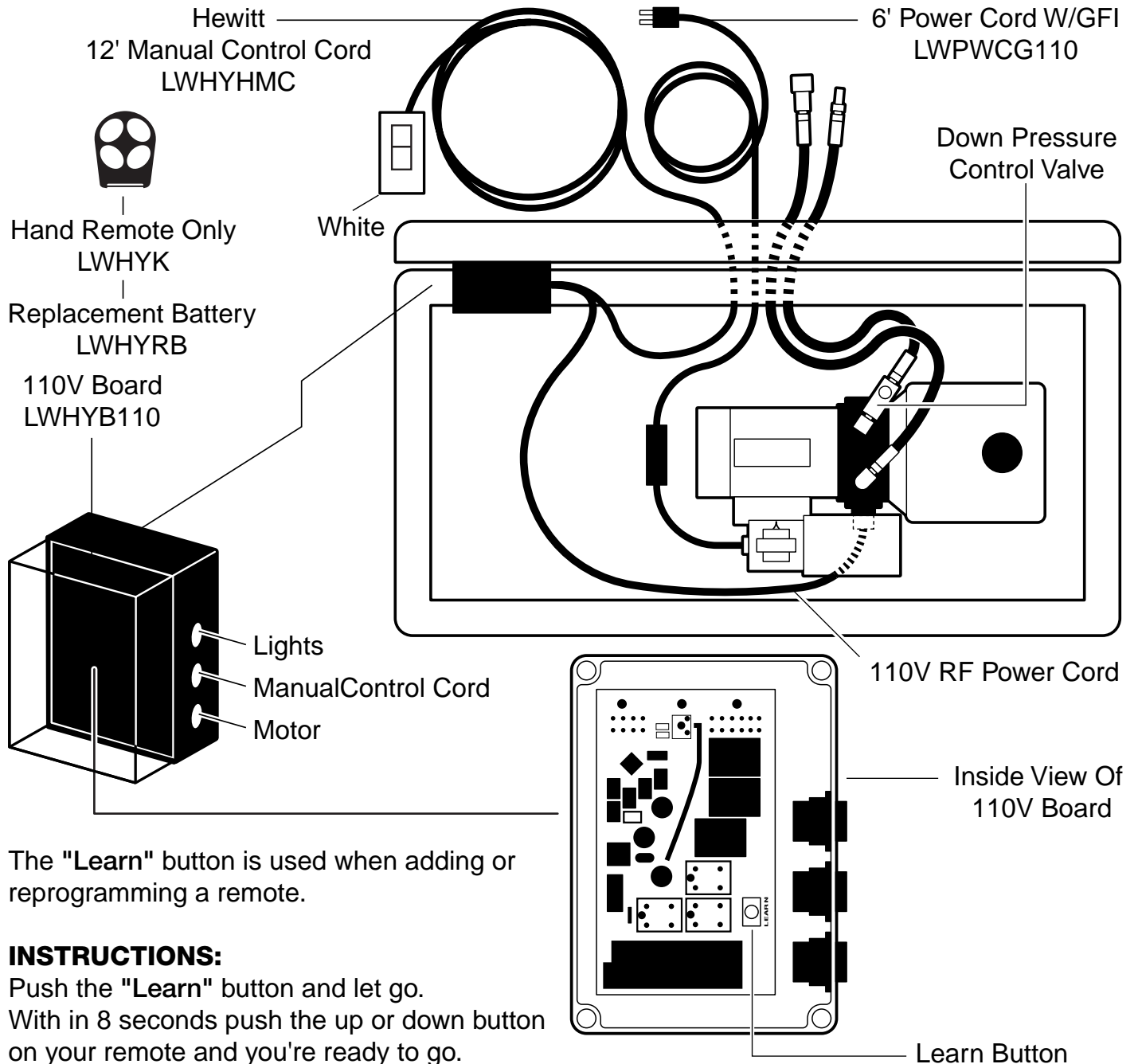
LWHYPR110 110v Hydraulic Pump with Reservoir (SPAQ180)  
LWHYPR12 12v Hydraulic Pump with Reservoir (SPA9149)

- (A)** 90° Straight Thread Elbow  
NAHY 6801-6-8
- (B)** Union Tee  
NAHY 2603-6-6-6
- (C)** Shut-Off Needle Valve  
NAHY PN400S
- (D)** Down Pressure Needle Valve  
NAHY PF400S
- (E)** O-Ring Boss / Male Pipe Adapter  
NAHY 6401-6-4
- (F)** 90° Pipe Swivel Elbow  
NAHY 1501-4-4
- (G)** 90° O-Ring Swivel Elbow  
NAHY 6901-6-4
- (H)** Hex Pipe Nipple  
NAHY 5404-4-4
- (I)** Pioneer Quick Disconnect M & F Set  
NAHY 4000-2
- (J)** 4100 Hydraulic Cylinder  
NAHYHC



# HYDRAULIC PONTOON LIFT PARTS LIST LOHP41110

## Complete 110 Volt Hydraulic Pump Box With Wireless Remote – LWHY110RC



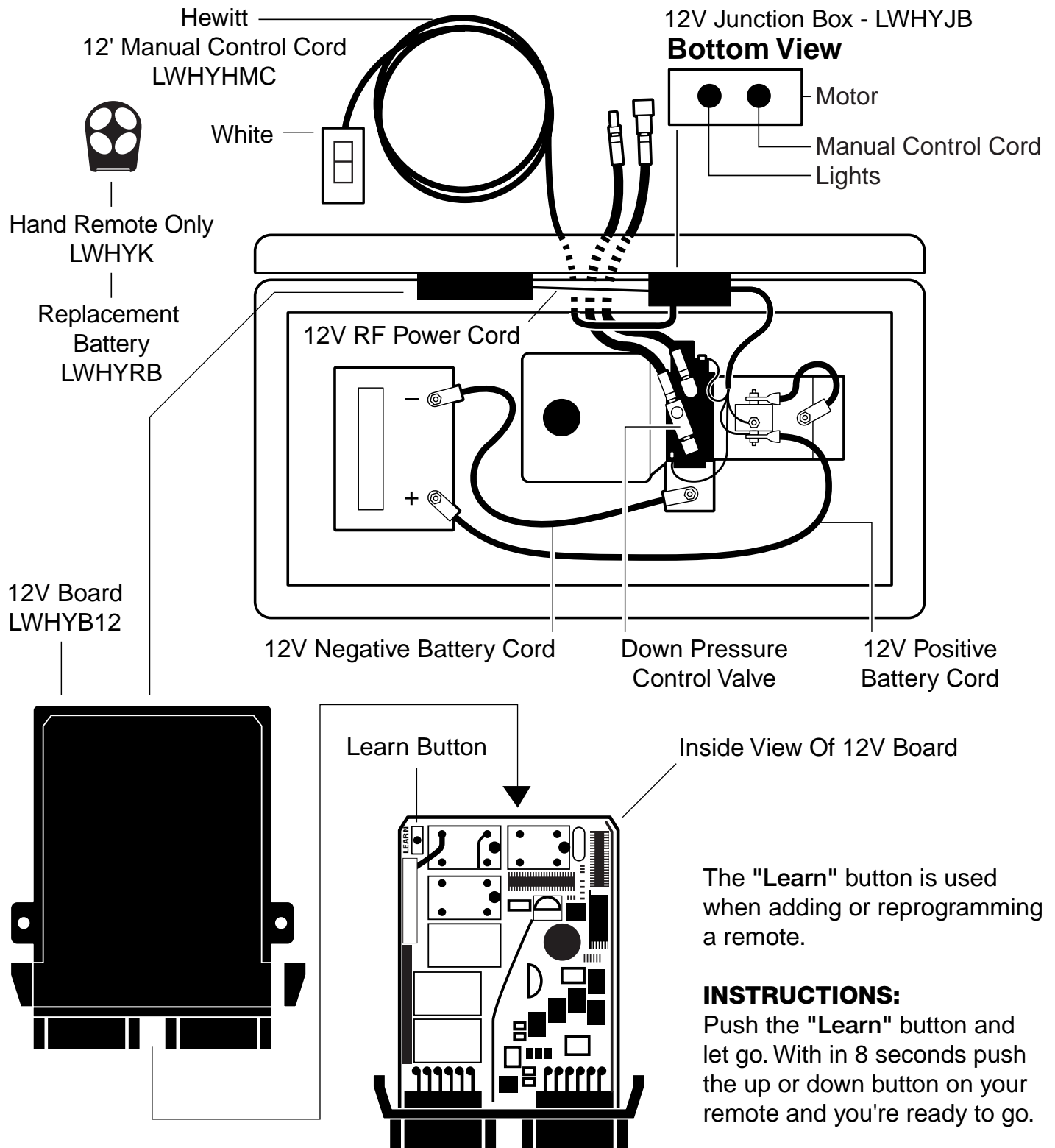
The "Learn" button is used when adding or reprogramming a remote.

**INSTRUCTIONS:**

Push the "Learn" button and let go.  
With in 8 seconds push the up or down button on your remote and you're ready to go.

<b>CHECK WIRE SIZE TO INSURE FULL POWER</b>										
MOTOR HP	<b>MINIMUM SIZE COPPER WIRE FOR FULL POWER</b>									
	0-50 FT		50-100 FT		100-200 FT		200-300 FT		300-400 FT	
	110V	220V	110V	220V	110V	220V	110V	220V	110V	220V
1-1/2 HP	8	12	6	8	3	8	1	6	1/0	4
2 HP	8	12	6	8	3	6	1/0	3	4/0	1/0
R-1-01	<b>MAXIMUM VOLTAGE DROP 4% FOR FULL POWER</b>									

## Complete 12 Volt Hydraulic Pump Box With Wireless Remote – LWHY12RC

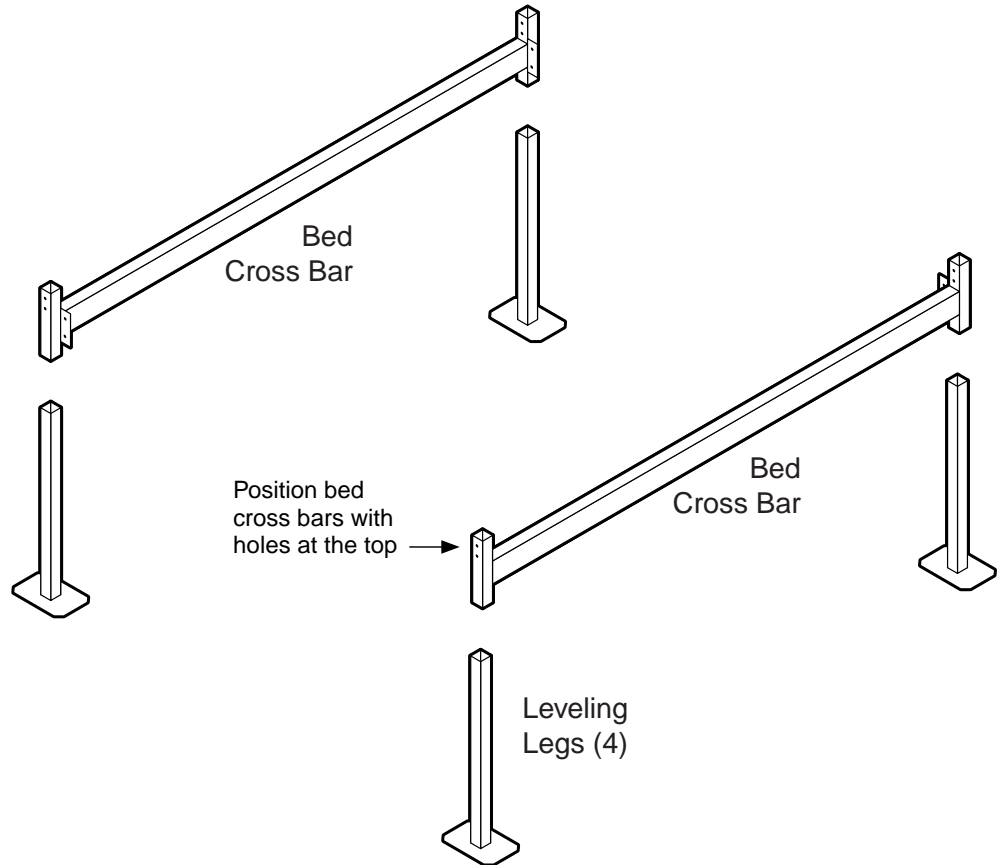


# HYDRAULIC PONTOON LIFT ASSEMBLY INSTRUCTIONS

**STEP 1:** Separate all the bolts, nuts and other hardware from the supplied bag.

**NOTE:** Pivot pins are very close in length, use a ruler to identify.

**STEP 2:** Insert leveling legs completely through each end of the Bed Cross Bars. Insert the 3/8" x 4" leg pin and secure with the clip.

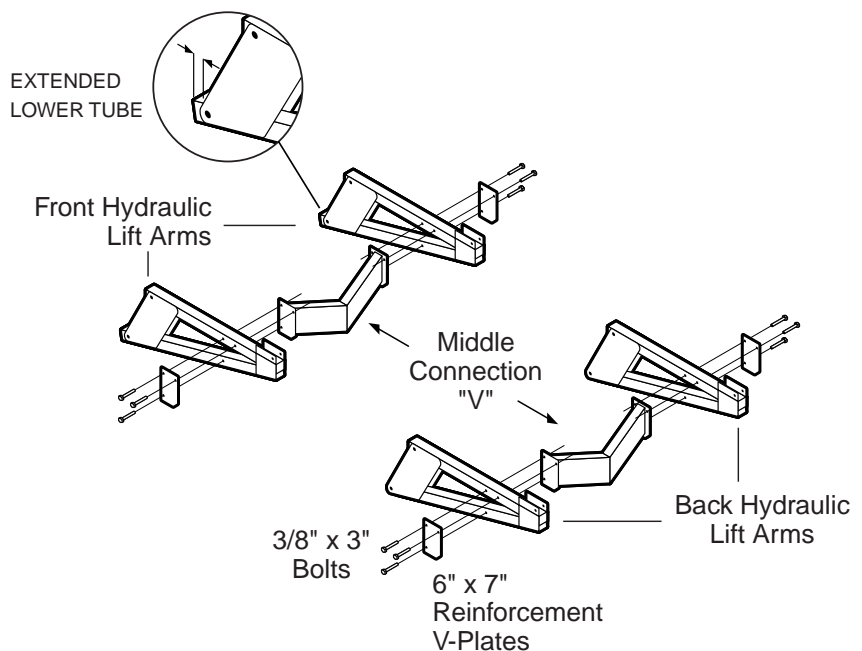


**STEP 3:** Attach one Middle Connection V to the two Front Hydraulic Lift Arms.

Place a 6" x 7" Reinforcement V-Plate on the outside of one of the Lift Arms and join the Lift Arm to the Middle Connection V with three 3/8" x 3" hex bolts and 3/8" nuts and tighten. Repeat on other side.

**STEP 4:** Attach the other Middle Connection V to the two Back Hydraulic Lift Arms.

Place a 6" x 7" Reinforcement V-Plate on the outside of one of the Lift Arms and join the Lift Arm to the Middle Connection V with three 3/8" x 3" hex bolts and 3/8" nuts and tighten.

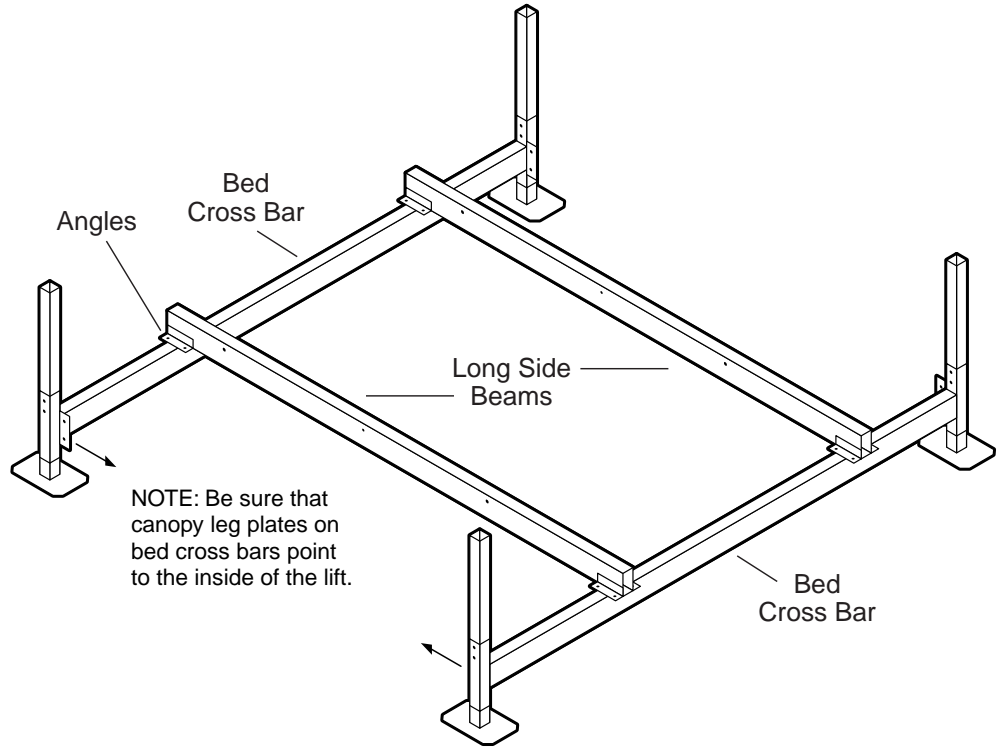




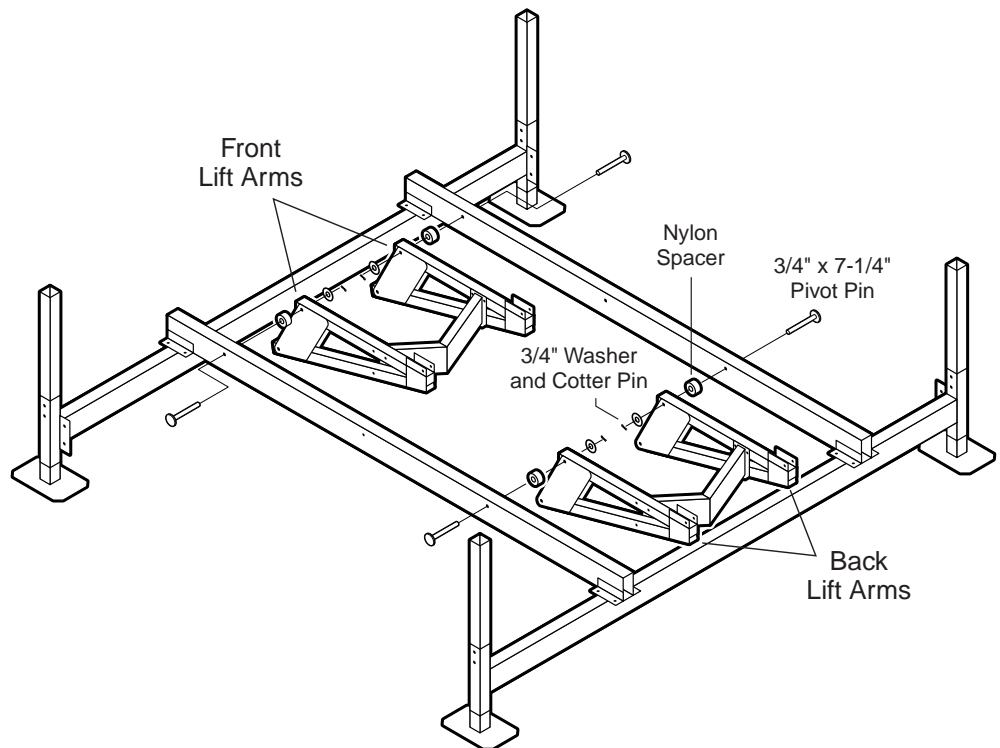
**HEWITT**

# HYDRAULIC PONTOON LIFT ASSEMBLY INSTRUCTIONS

**STEP 5:** Lay the Long Side Beams on top of the Bed Cross Bars (with the angles on the bottom.)  
NOTE: Canopy Leg Plates should point to inside of lift.

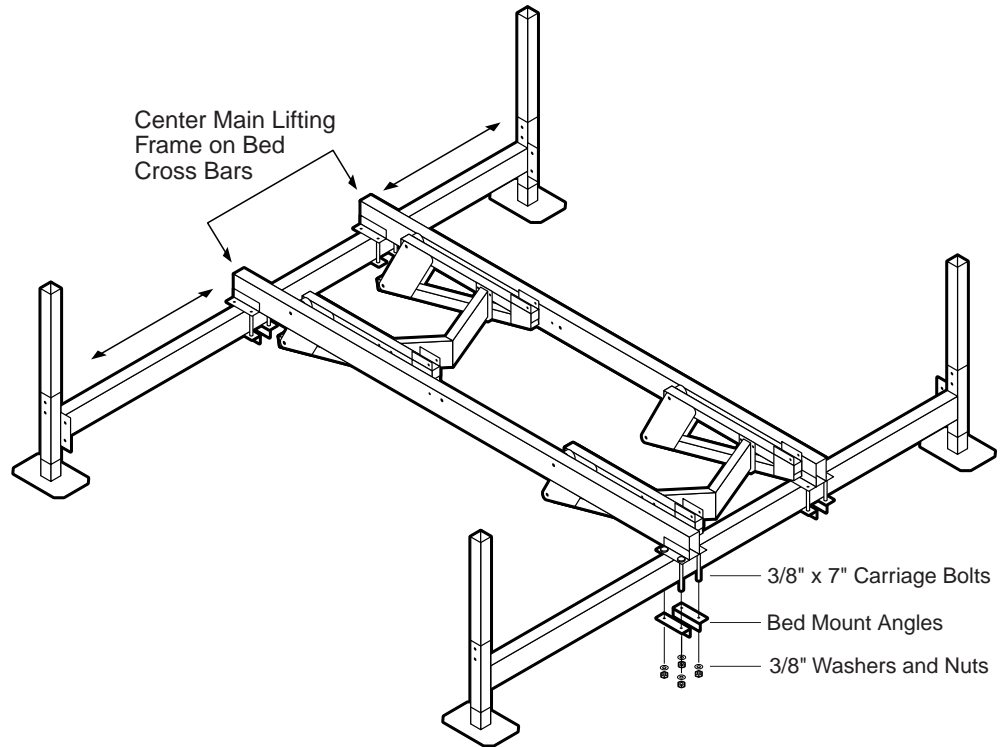


**STEP 6 :** Set the assembled back and front Lift Arms into the frame. Insert the (4) 3/4" x 7-1/4" Pivot Pins in the Long Side Beams. Slide one nylon spacer onto each Pivot Pin and finish running the pins through the Lift Arms. Secure each Pivot Pin with one 3/4" S.A.E. washer and a cotter pin – bend over ends of cotter pin.

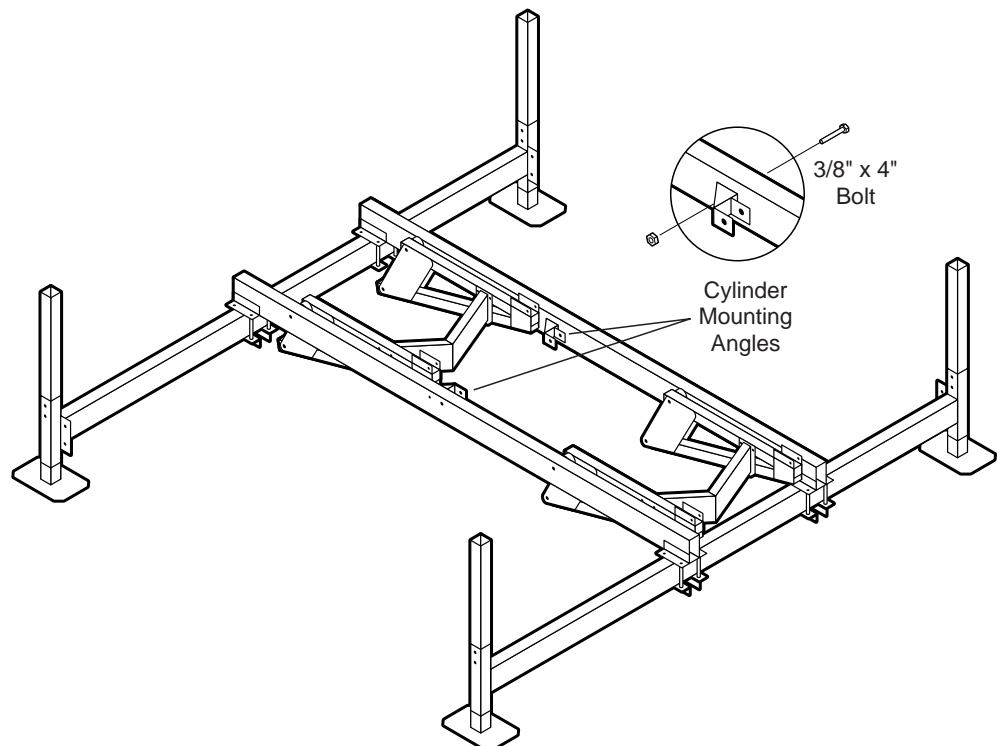


# HYDRAULIC PONTOON LIFT ASSEMBLY INSTRUCTIONS

**STEP 7:** Center the main lifting frame on the Bed Cross Bars. Bolt the Long Side Beams to the Bed Cross Bars using the bed mount angles.



**STEP 8:** Install the Cylinder Mounting Angles by inserting a 3/8" x 4" bolt from the outside of each Long Side Beam and through the Cylinder Mount Angles. Secure with 3/8" nuts.



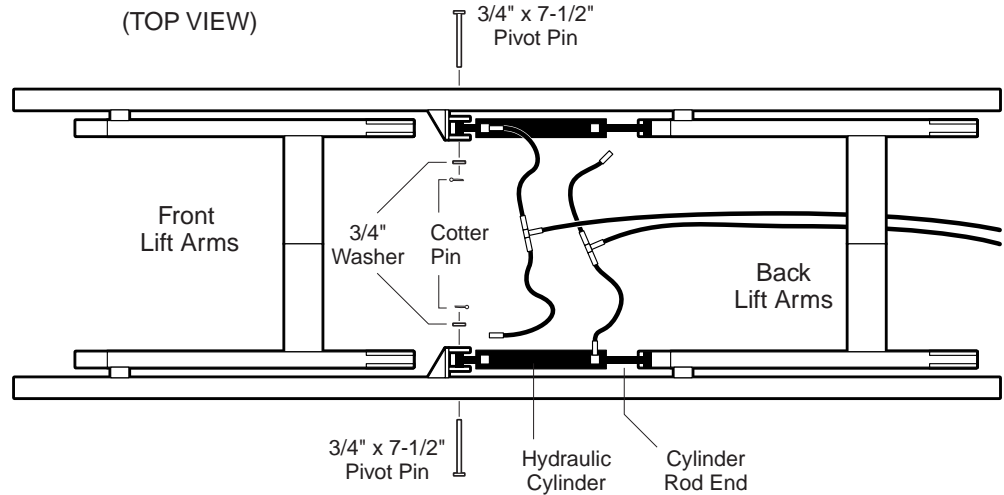
# HYDRAULIC PONTOON LIFT ASSEMBLY INSTRUCTIONS

**STEP 9:**

Install the Hydraulic Cylinders into the Cylinder Mounting Angles using a 3/4" x 7-1/2" Pivot Pin, held in place by a 3/4" S.A.E. washer and cotter pin. Bend over ends of cotter pins.

NOTE: Make sure the cylinder's rod end is down and the hoses face toward each other as shown.

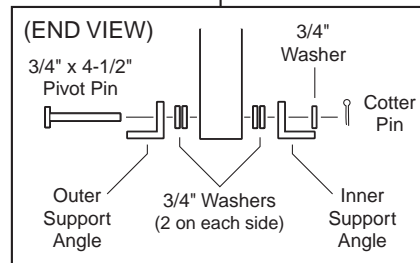
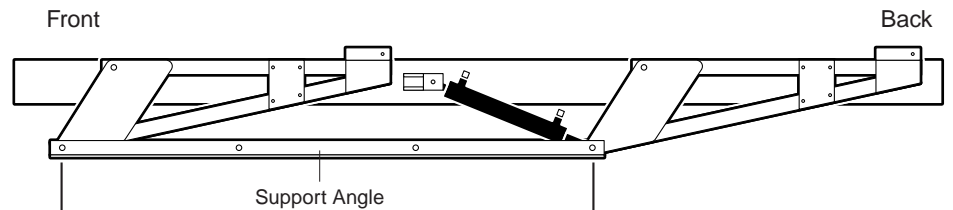
Repeat on other side.



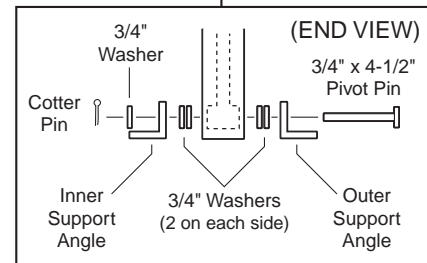
**STEP 10:** Install the bottom support angles. (Note: Make sure angles face outward  $\perp$  L). Insert one 3/4" x 4-1/2" Pivot Pin through the outer angle, through two 3/4" S.A.E. washers and then through the bottom of the Back Hydraulic Lift Arm. Slide on two more 3/4" S.A.E. washers and then the inner angle. Secure the Pivot Pin with a 3/4" S.A.E. washer and cotter pin. (See Step 10 Illustration).

Repeat on other side.

(SIDE VIEW)



**STEP 11 ILLUSTRATION**



**STEP 10 ILLUSTRATION**

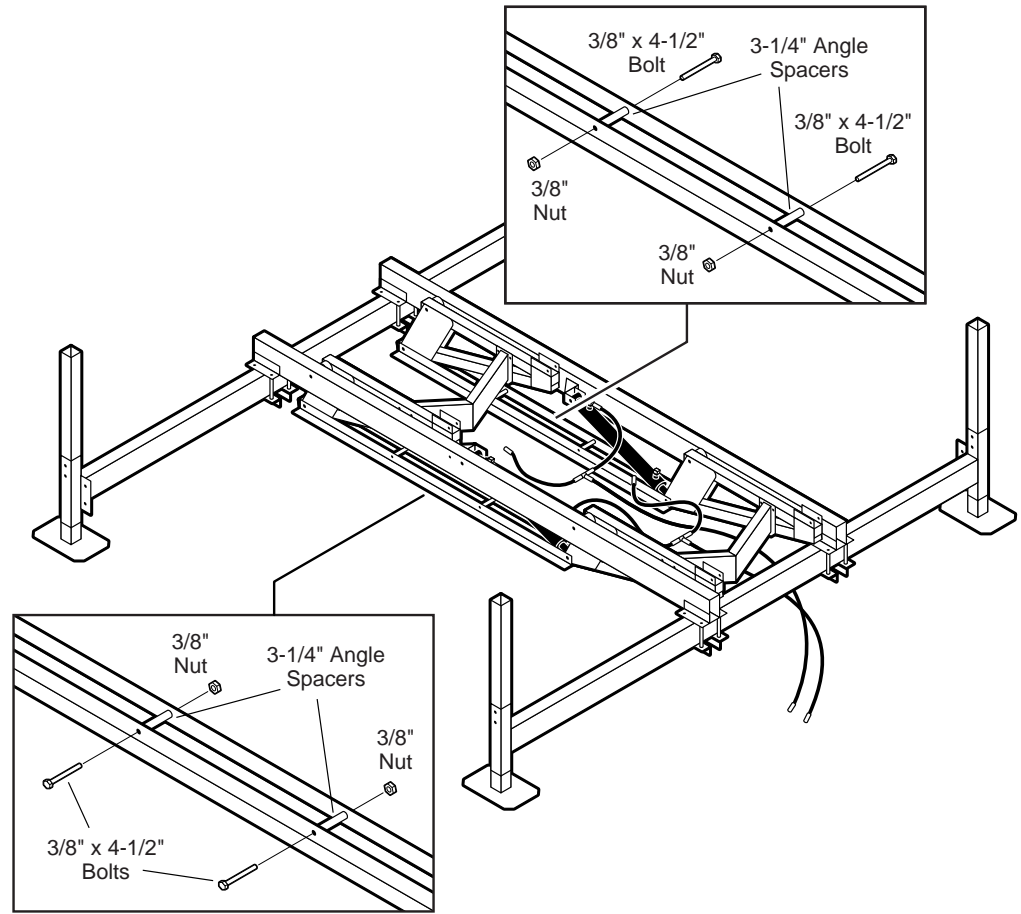
**STEP 11:** Insert one 3/4" x 4-1/2" Pivot Pin through the outer support angle, through two 3/4" S.A.E. washers and then through the Front Lift Arm. Slide on two more 3/4" S.A.E. washers and then the inner angle. Secure the Pivot Pin with a 3/4" S.A.E. washer and cotter pin. (See Step 11 Illustration.)

Repeat on other side.

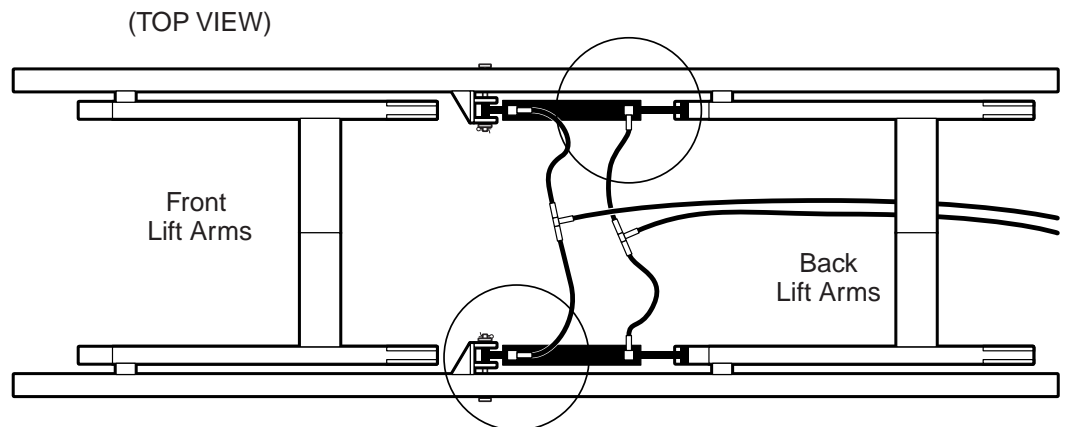


# HYDRAULIC PONTOON LIFT ASSEMBLY INSTRUCTIONS

**STEP 12:** Install two 3-1/4" angle spacers on each side between the Bottom Support Angles using the 3/8" x 4-1/2" bolts and 3/8" nuts, then tighten.

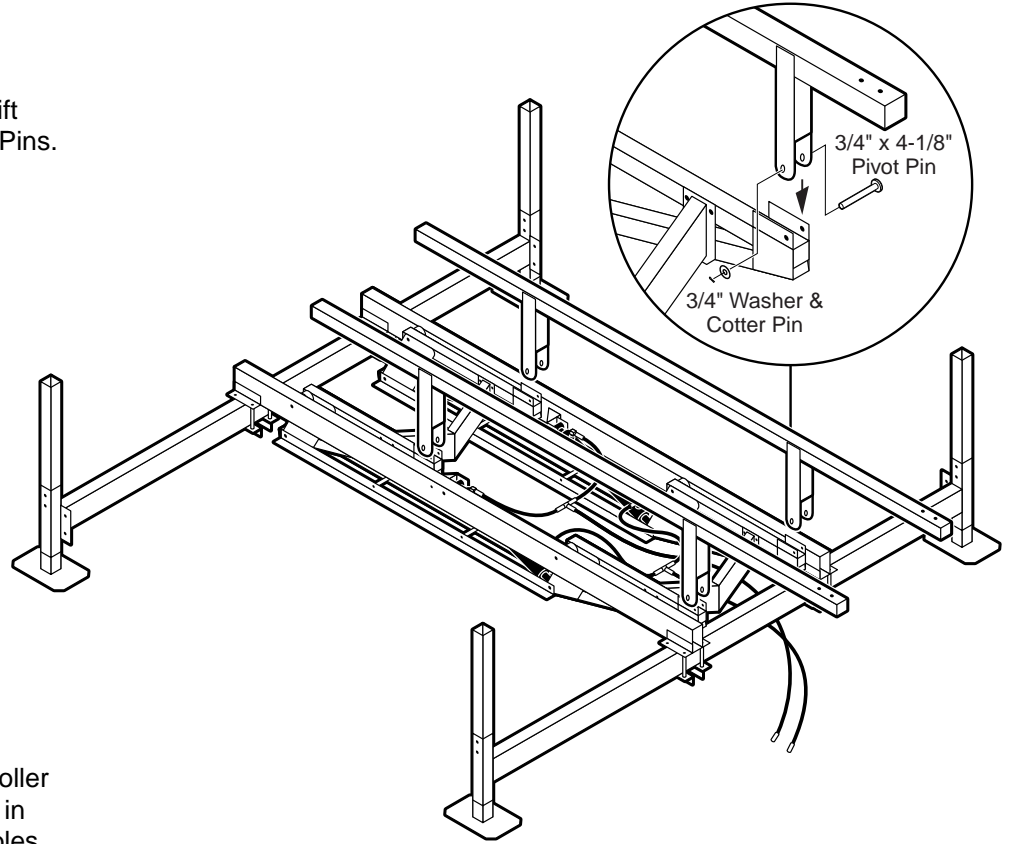


**STEP 13:** Connect the Hydraulic Cylinder Hoses straight across from each other. Tighten fittings

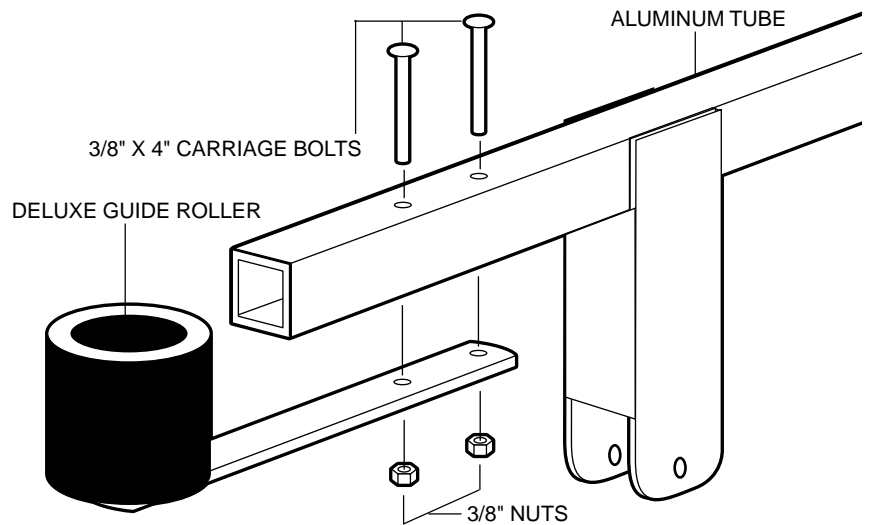


# HYDRAULIC PONTOON LIFT ASSEMBLY INSTRUCTIONS

**STEP 14:** Install the Aluminum Hydraulic Pontoon Tubes to the Lift Arm using the 3/4" x 4-1/8" Pivot Pins. Secure each Pivot Pin with a 3/4" S.A.E. Washer and Cotter Pin.



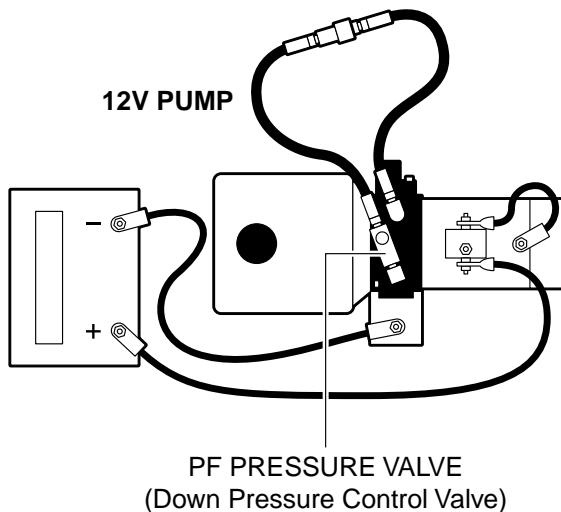
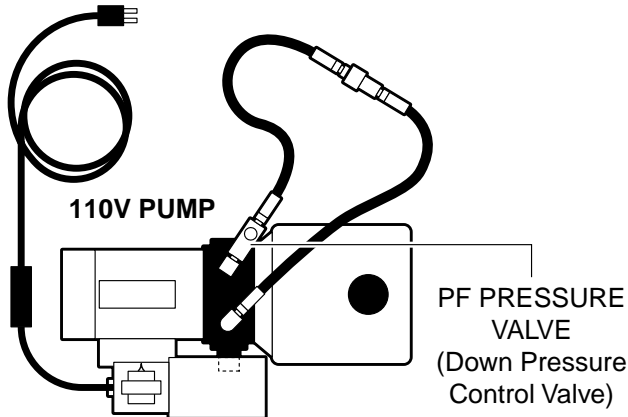
**STEP 15:** Place Deluxe Guide Roller under Aluminum tube (as shown in diagram) and align with drilled holes. Use (2) 3/8" X 4" Carriage Bolts and (2) 3/8" Nuts to fasten each Roller. Make sure Nuts are on under side of Guide Roller Bracket.





# HYDRAULIC PONTOON LIFT OPERATING INSTRUCTIONS

**STEP 1:** Using **ONLY** the special oil provided, fill the reservoir attached to the motor in the box. Be sure to replace the reservoir cover. Next, join together the Quick Connector Couplers on the short hoses attached to the pump to form a closed loop.



**STEP 2:** If this is a 110 volt AC unit, plug it in, then go to Step 3. If this is a 12 volt DC unit, hook the motor up to the battery. Check cable markings and battery terminals to ensure you have connected positive to positive and negative to negative.

**STEP 3:** Open the PF Pressure Valve, then operate the cable switch box to run the motor up and then down for about 15 seconds each way. Disconnect the power and shut off the valve. Disconnect the Quick Connector Couplers and connect them to the longer hoses going to the lift – let the system stand for 8-10 minutes to allow air to settle in pump.

**STEP 4:** After 8-10 minutes, repeat Step 2, then open all three hose valves and run the pump until the lift starts to come up. If the oil reservoir gets low, disconnect power, refill the oil reservoir and put the reservoir cap back on – let stand for another 8-10 minutes.

**STEP 5:** After 8-10 minutes, repeat Step 2, then run the pump and your lift should start to go up. Keep running the lift up and down until you have worked out all the air.

**WARNING:** Never work on any part of the lift with the power connected.

Do not fill the oil reservoir with the lift in the up position and do not overfill the reservoir. When all air is out, oil level should be about 3/4 full.

**TIPS:** If oil starts to over-flow or foam, just let it stand for 8-10 minutes to let the air work its way through the system.

When your lift is going up and down well, you're ready to put your boat on. The PF Valve closest to the pump controls the down pressure speed. If the valve is open too far, the lift will bounce down. Close the pressure valve until your lift goes down smoothly. The other two valves by the quick connects are shut-off valves and can be left all the way open – but must be shut off when working on the lift or disconnecting any hoses.

**STORAGE:** Put the lift in the up position and put grease on the hydraulic cylinder shafts, then put the lift down and let the grease "ball up" on the shaft.

**WIRELESS REMOTE MODELS:** The switch functions on battery operated wireless remote controls vary from model to model depending on their preprogrammed code. Once your lift is operating properly, press the buttons on the remote control to determine which button raises and lowers the lift, then apply the provided up and down stickers to the remote buttons (in the remote bag).

**NOTE:** If end of power cord is cut - Warranty is void.