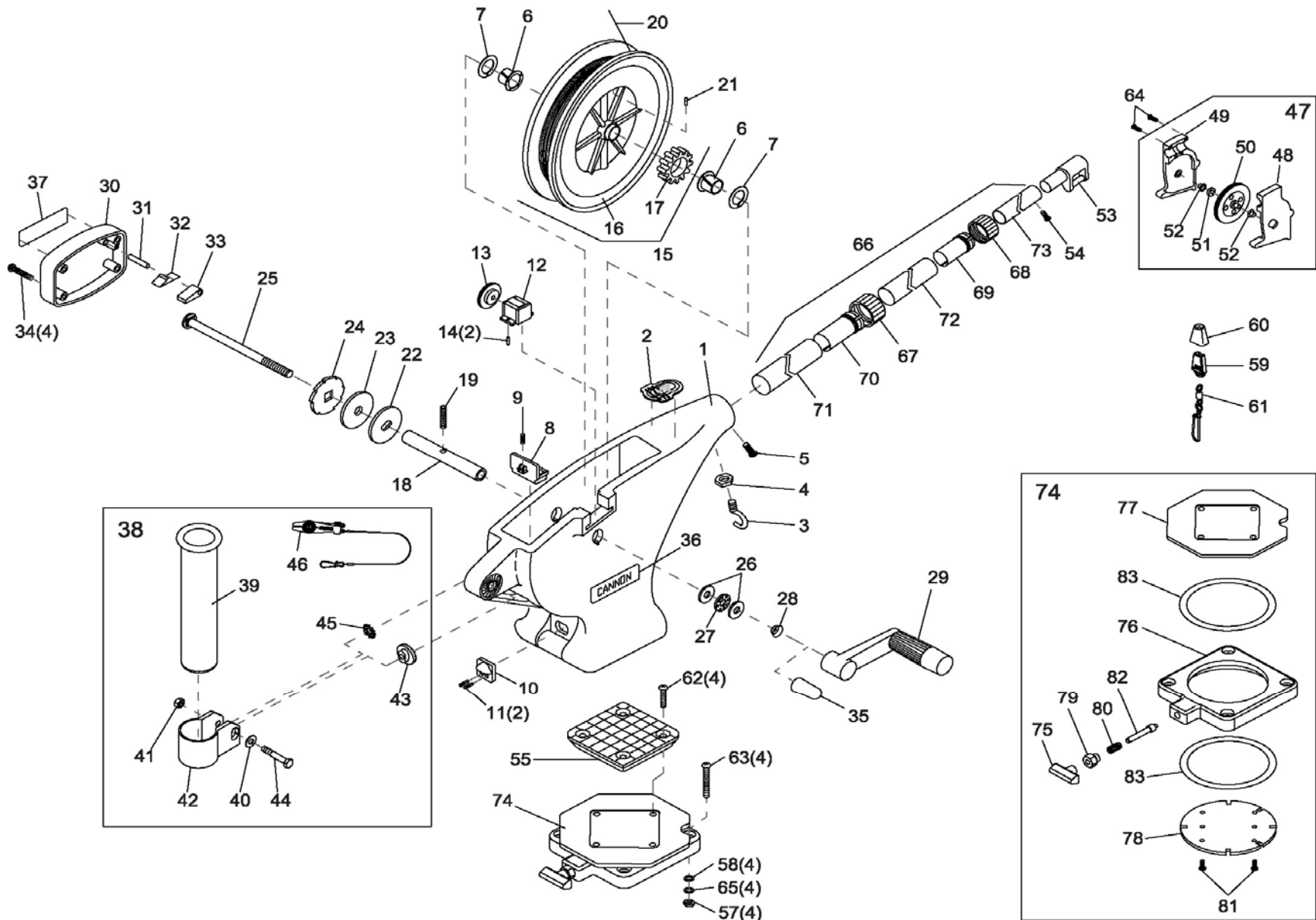




UNI-TROLL 10 METRIC™

for use with "AH" serial numbers



In the U.S.A., replacement parts may be ordered directly from CANNON Parts Dept., 121 Power Drive, Mankato, Minnesota 56001. In Canada, parts may be ordered from any of the Canadian Authorized Service Centers shown on the enclosed list. Be sure to provide the MODEL and SERIAL numbers of your downrigger when ordering parts. Please use the correct part numbers from the parts list. Payment for any parts ordered from the CANNON parts department, may be by cash, personal check, Discover Card, MasterCard or VISA. To order, call 1-800-227-6433 or FAX 1-800-527-4464.

| | | | | | | | | |
|----|---------|-------------------------------------|----|---------|------------------------------------|----|---------|--|
| 1 | 3330002 | FRAME - UNI-TROLL | 29 | 0902000 | CRANK HANDLE - UNI-TROLL | 57 | 2263102 | NUT - HEX 1/4"-20 [4.EA] |
| 2 | 3327004 | DECAL - NOSE, UNI-TROLL | 30 | 3321001 | COVER - CLUTCH, ROUND (LEXAN) | 58 | 2371712 | WASHER - 9/32" FLAT [4.EA] |
| 3 | 9040040 | HOOK - 1/4" - 20 ROLLED | 31 | 9250003 | PIN - DOWEL 3/16" x 7/8" - RATCHET | 59 | 9100100 | TERMINATOR |
| 4 | 2263102 | NUT - HEX 1/4"-20 | 32 | 9400070 | SPRING - DOG RATCHET | 60 | 9100101 | TERMINATOR CUSHION |
| 5 | 9280750 | SCREW - 1/4" - 20 (RH) x 3/4" PPH | 33 | 9100160 | DOG - RATCHET | 61 | 9100620 | TERMINATOR SNAP & SWIVEL |
| 6 | 9010001 | BEARING - REEL SHAFT NYLINER [2.EA] | 34 | 9370001 | SCREW - #10 x 1-1/4" PPHSMS [4.EA] | 62 | 9280713 | BOLT - TRUSS 1/4" - 20 x 1-1/2" [4.EA] |
| 7 | 9430003 | WASHER - 5/8" ID (NYLON) [2.EA] | 35 | 9100721 | RED THREAD CAP | 63 | 9280725 | BOLT - TRUSS 1/4" - 20 x 2-1/2" [4.EA] |
| 8 | 3356050 | BASE LATCH | 36 | 3395631 | DECAL - CANNON SMALL | 64 | 9370010 | SCREW - #4 x 1/2" PPH [3.EA] |
| 9 | 9400050 | SPRING - BASE LATCH | 37 | 3395630 | DECAL - CANNON LARGE | 65 | 9950357 | WASHER - LOCK 1/4" SPLIT [4.EA] |
| 10 | 3356052 | BASE LATCH TAB | 38 | 2477001 | BAG ASSY - SINGLE ROD HOLDER | 66 | 2210821 | TELESCOPIC BOOM |
| 11 | 9370010 | SCREW - #4 x 1/2" PPH [2.EA] | 39 | 0290796 | >TUBE - ROD HOLDER | 67 | 2219822 | >BASE TUBE CLAMP |
| 12 | 3320011 | DEPTH COUNTER - 3 DIGIT (METRIC) | 40 | 2151726 | >WASHER - 5/16" FLAT | 68 | 2219823 | >MID TUBE CLAMP |
| 13 | 3333010 | COUNTER GEAR (METRIC) | 41 | 2383106 | >NUT - 5/16"-18 SS | 69 | 2222825 | >MID TUBE COLLET |
| 14 | 0854654 | COUNTER CUSHION/STOPPER [2.EA] | 42 | 3319005 | >CLAMP - ROD HOLDER w/ SLOT | 70 | 2222826 | >BASE TUBE COLLET |
| 15 | 3374010 | REEL ASSY - HS ELECTRIC (METRIC) | 43 | 3325002 | >DISK - ROD HOLDER | 71 | 2290828 | ►BOOM BASE TUBE (BLACK) |
| 16 | 0274732 | ►REEL - ROUGH 3.75" | 44 | 9040310 | >BOLT - HEX 5/16"-18 x 2" | 72 | 2290829 | ►BOOM MID TUBE (BLACK) |
| 17 | 3333011 | >GEAR - REEL (METRIC) | 45 | 9430160 | >WASHER - STAR 5/16" | 73 | 2290830 | ►BOOM END TUBE (BLACK) |
| 18 | 1080001 | SHAFT - REEL, UNI-TROLL | 46 | 2277002 | >UNIVERSAL LINE RELEASE | 74 | 2998905 | SWIVEL BASE |
| 19 | 3393412 | SCREW - SET 5/16"-18 x 1" (REEL) | 47 | 3992300 | SWIVEL HEAD ASSEMBLY | 75 | 2249001 | >KNOB - RELEASE PIN (LEXAN) |
| 20 | 3775396 | SPOOL CABLE SS [200.FT] | 48 | 0267001 | ►SIDE PLATE (RH) | 76 | 2267001 | >BASE PLATE (LEXAN) |
| 21 | 9100070 | CABLE LEADER SLEEVE | 49 | 0267002 | ►SIDE PLATE (LH) | 77 | 2267002 | >SWIVEL PLATE (LEXAN) |
| 22 | 0467695 | BRAKE PLATE - REEL | 50 | 0269726 | ►PULLY - SWIVEL HEAD | 78 | 2267006 | >INDEXING PLATE (TAPPED) |
| 23 | 1264670 | CLUTCH PAD | 51 | 3397300 | ►WASHER - .735 OD X .36 ID | 79 | 2277001 | >NUT - RETAINER RELEASE |
| 24 | 0467694 | BRAKE PLATE - RATCHET | 52 | 9010070 | ►HDW BEARING BRASS[2.EA] | 80 | 2287002 | >SPRING - RELEASE PIN |
| 25 | 1000904 | SHAFT - RATCHET - UNI-TROLL | 53 | 2227820 | BOOM END - TELESCOPIC (LEXAN) | 81 | 2372100 | >SCREW - #8 x 5/8" PPHMS [2.EA] |
| 26 | 9010310 | WASHER - THRUST [2.EA] | 54 | 2372100 | SCREW - #8 x 5/8" PPHMS | 82 | 3392600 | >RELEASE PIN |
| 27 | 9010280 | BEARING - THRUST | 55 | 3307002 | LOW PROFILE MOUNTING BASE (LEXAN) | 83 | 9010004 | >BEARING - SWIVEL BASE [2.EA] |
| 28 | 9400040 | SPRING - HAND CRANK | 56 | 2994894 | *BAG ASSEMBLY, MOUNTING (KIT #4) | | | |

> PART OF ASSEMBLY

►ITEM CANNOT BE SOLD SEPARATELY

* PARTS USED BUT NOT SHOWN