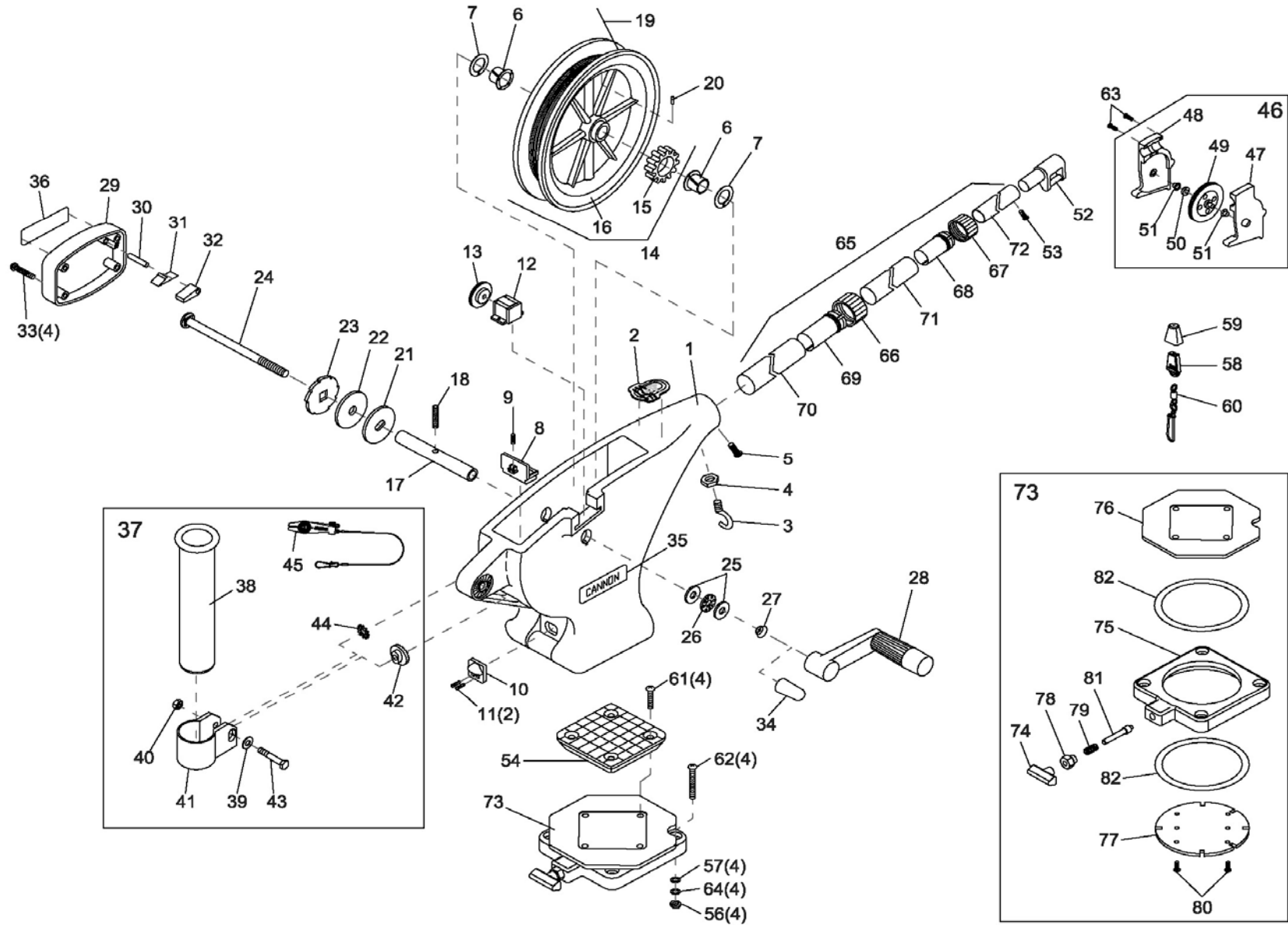




# UNI-TROLL 10™

for use with "AH" serial numbers



In the U.S.A., replacement parts may be ordered directly from CANNON Parts Dept., 121 Power Drive, Mankato, Minnesota 56001. In Canada, parts may be ordered from any of the Canadian Authorized Service Centers shown on the enclosed list. Be sure to provide the MODEL and SERIAL numbers of your downrigger when ordering parts. Please use the correct part numbers from the parts list. Payment for any parts ordered from the CANNON parts department, may be by cash, personal check, Discover Card, MasterCard or VISA. To order, call 1-800-227-6433 or FAX 1-800-527-4464.

|    |         |                                      |    |         |                                    |    |         |  |
|----|---------|--------------------------------------|----|---------|------------------------------------|----|---------|--|
| 1  | 3330002 | FRAME - UNI-TROLL                    | 29 | 3321001 | COVER - CLUTCH, ROUND (LEXAN)      | 57 | 2371712 | WASHER - 9/32" FLAT [4.EA]             |
| 2  | 3327004 | DECAL - NOSE, UNI-TROLL              | 30 | 9250003 | PIN - DOWEL 3/16" x 7/8" - RATCHET | 58 | 9100100 | TERMINATOR                             |
| 3  | 9040040 | HOOK - 1/4" - 20 ROLLED              | 31 | 9400070 | SPRING - DOG RATCHET               | 59 | 9100101 | TERMINATOR CUSHION                     |
| 4  | 2263102 | NUT - HEX 1/4"-20                    | 32 | 9100160 | DOG - RATCHET                      | 60 | 9100620 | TERMINATOR SNAP & SWIVEL               |
| 5  | 9280750 | SCREW - 1/4" - 20 (RH) x 3/4" PPH    | 33 | 9370001 | SCREW - #10 x 1-1/4" PPHSMS [4.EA] | 61 | 9280713 | BOLT - TRUSS 1/4" - 20 x 1-1/2" [4.EA] |
| 6  | 9010001 | BEARING - REEL SHAFT NYLINER [2.EA]  | 34 | 9100721 | RED THREAD CAP                     | 62 | 9280725 | BOLT - TRUSS 1/4" - 20 x 2-1/2" [4.EA] |
| 7  | 9430003 | WASHER - 5/8" ID (NYLON) [2.EA]      | 35 | 3395631 | DECAL - CANNON SMALL               | 63 | 9370010 | SCREW - #4 x 1/2" PPH [3.EA]           |
| 8  | 3356050 | BASE LATCH                           | 36 | 3395630 | DECAL - CANNON LARGE               | 64 | 9950357 | WASHER - LOCK 1/4" SPLIT [4.EA]        |
| 9  | 9400050 | SPRING - BASE LATCH                  | 37 | 2477001 | BAG ASSY - SINGLE ROD HOLDER       | 65 | 2210821 | TELESCOPIC BOOM                        |
| 10 | 3356052 | BASE LATCH TAB                       | 38 | 0290796 | >TUBE - ROD HOLDER                 | 66 | 2219822 | >BASE TUBE CLAMP                       |
| 11 | 9370010 | SCREW - #4 x 1/2" PPH [2.EA]         | 39 | 2151726 | >WASHER - 5/16" FLAT               | 67 | 2219823 | >MID TUBE CLAMP                        |
| 12 | 0220477 | DEPTH COUNTER - 3 DIGIT              | 40 | 2383106 | >NUT - 5/16"-18 SS                 | 68 | 2222825 | >MID TUBE COLLET                       |
| 13 | 3333003 | GEAR - COUNTER, UNI-TROLL            | 41 | 3319005 | >CLAMP - ROD HOLDER w/ SLOT        | 69 | 2222826 | >BASE TUBE COLLET                      |
| 14 | 3397913 | REEL ASSEMBLY - UNI-TROLL HIGH SPEED | 42 | 3325002 | >DISK - ROD HOLDER                 | 70 | 2290828 | ▶BOOM BASE TUBE (BLACK)                |
| 15 | 3333004 | >GEAR - REEL, UNI-TROLL              | 43 | 9040310 | >BOLT - HEX 5/16"-18 x 2"          | 71 | 2290829 | ▶BOOM MID TUBE (BLACK)                 |
| 16 | 3397904 | ▶REEL - ROUGH 5.75"                  | 44 | 9430160 | >WASHER - STAR 5/16"               | 72 | 2290830 | ▶BOOM END TUBE (BLACK)                 |
| 17 | 1080001 | SHAFT - REEL, UNI-TROLL              | 45 | 2277002 | >UNIVERSAL LINE RELEASE            | 73 | 2998905 | SWIVEL BASE                            |
| 18 | 3393412 | SCREW - SET 5/16"-18 x 1" (REEL)     | 46 | 3992300 | SWIVEL HEAD ASSEMBLY               | 74 | 2249001 | >KNOB - RELEASE PIN (LEXAN)            |
| 19 | 3775396 | SPOOL CABLE SS [200.FT]              | 47 | 0267001 | ▶SIDE PLATE (RH)                   | 75 | 2267001 | >BASE PLATE (LEXAN)                    |
| 20 | 9100070 | CABLE LEADER SLEEVE                  | 48 | 0267002 | ▶SIDE PLATE (LH)                   | 76 | 2267002 | >SWIVEL PLATE (LEXAN)                  |
| 21 | 0467695 | BRAKE PLATE - REEL                   | 49 | 0269726 | ▶PULLY - SWIVEL HEAD               | 77 | 2267006 | >INDEXING PLATE (TAPPED)               |
| 22 | 1264670 | CLUTCH PAD                           | 50 | 3397300 | ▶WASHER - .735 OD X .36 ID         | 78 | 2277001 | >NUT - RETAINER RELEASE                |
| 23 | 0467694 | BRAKE PLATE - RATCHET                | 51 | 9010070 | ▶HDW BEARING BRASS[2.EA]           | 79 | 2287002 | >SPRING - RELEASE PIN                  |
| 24 | 1000904 | SHAFT - RATCHET - UNI-TROLL          | 52 | 2227820 | BOOM END - TELESCOPIC (LEXAN)      | 80 | 2372100 | >SCREW - #8 x 5/8" PPHMS [2.EA]        |
| 25 | 9010310 | WASHER - THRUST [2.EA]               | 53 | 2372100 | SCREW - #8 x 5/8" PPHMS            | 81 | 3392600 | >RELEASE PIN                           |
| 26 | 9010280 | BEARING - THRUST                     | 54 | 3307002 | LOW PROFILE MOUNTING BASE (LEXAN)  | 82 | 9010004 | >BEARING - SWIVEL BASE [2.EA]          |
| 27 | 9400040 | SPRING - HAND CRANK                  | 55 | 2994894 | *BAG ASSEMBLY, MOUNTING (KIT #4)   |    |         |  |
| 28 | 0902000 | CRANK HANDLE - UNI-TROLL             | 56 | 2263102 | NUT - HEX 1/4"-20 [4.EA]           |    |         |  |

> PART OF ASSEMBLY

▶ ITEM CANNOT BE SOLD SEPARATELY

\* PARTS USED BUT NOT SHOWN