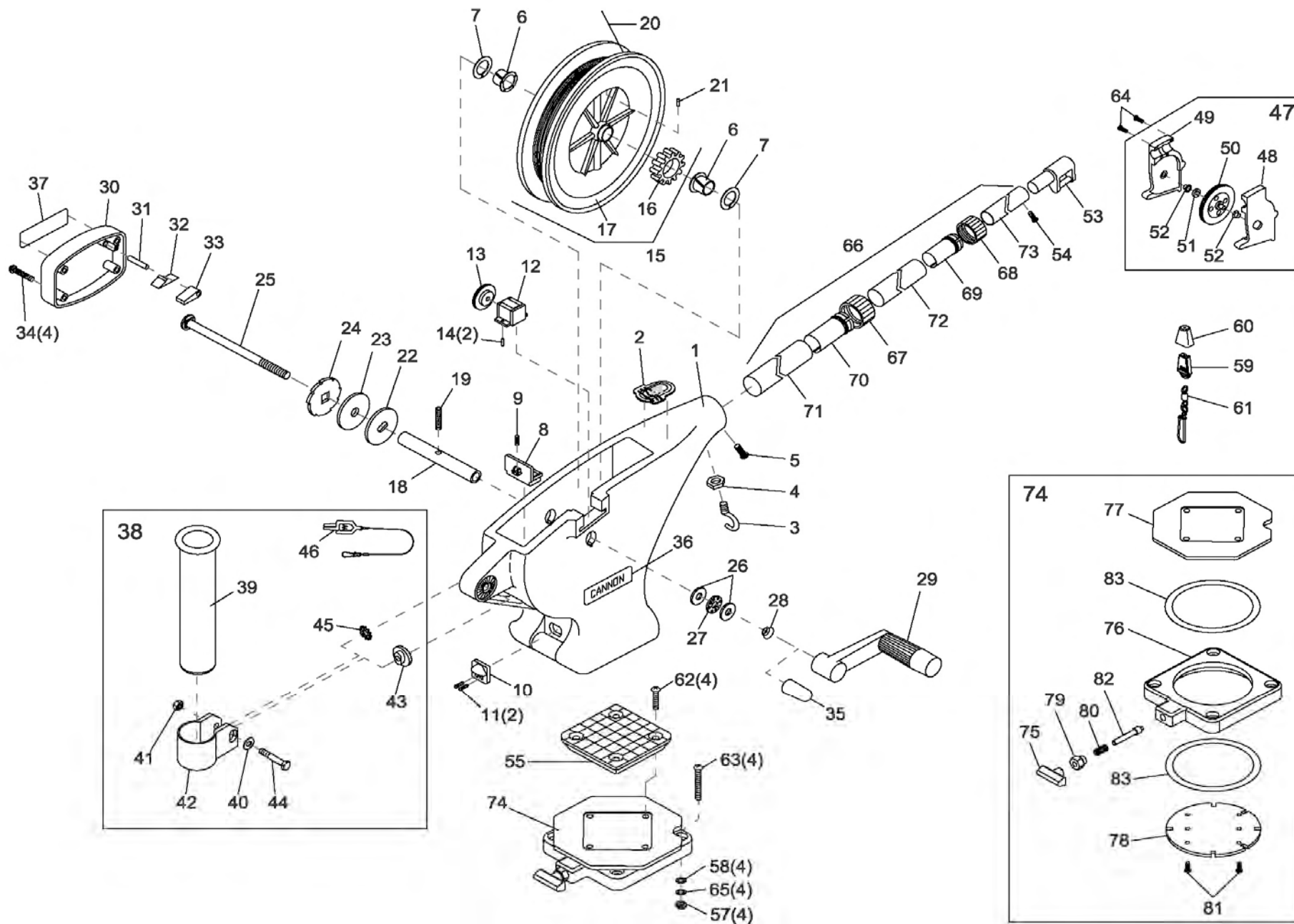


for use with "AI" serial numbers



In the U.S.A., replacement parts may be ordered directly from CANNON Parts Dept., 121 Power Drive, Mankato, Minnesota 56001. In Canada, parts may be ordered from any of the Canadian Authorized Service Centers shown on the enclosed list. Be sure to provide the MODEL and SERIAL numbers of your downrigger when ordering parts. Please use the correct part numbers from the parts list. Payment for any parts ordered from the CANNON parts department, may be by cash, personal check, Discover Card, MasterCard or VISA. To order, call 1-800-227-6433 or FAX 1-800-527-4464.

1	3392506	FRAME - UNI-TROLL, WHITE	29	0902000	CRANK HANDLE - UNI-TROLL	57	2263102	NUT - HEX 1/4"-20 [4.EA]
2	3327004	DECAL - NOSE, UNI-TROLL	30	3390202	COVER - CLUTCH, ROUND, WHITE (LEXAN)	58	2371712	WASHER - 9/32" FLAT [4.EA]
3	9040040	HOOK - 1/4" - 20 ROLLED	31	9250003	PIN - DOWEL 3/16" x 7/8" - RATCHET	59	9100100	TERMINATOR
4	2263102	NUT - HEX 1/4"-20	32	9400070	SPRING - DOG RATCHET	60	9100101	TERMINATOR CUSHION
5	9280750	SCREW - 1/4" - 20 (RH) x 3/4" PPH	33	9100160	DOG - RATCHET	61	9100620	TERMINATOR SNAP & SWIVEL
6	9010001	BEARING - REEL SHAFT NYLINER [2.EA]	34	9370001	SCREW - #10 x 1-1/4" PPHSMS [4.EA]	62	9280713	BOLT - TRUSS 1/4" - 20 x 1-1/2" [4.EA]
7	9430003	WASHER - 5/8" ID (NYLON) [2.EA]	35	9100721	RED THREAD CAP	63	9280725	BOLT - TRUSS 1/4" - 20 x 2-1/2" [4.EA]
8	3356050	BASE LATCH	36	3395633	DECAL - CANNON SMALL TS	64	9370010	SCREW - #4 x 1/2" PPH [3.EA]
9	9400050	SPRING - BASE LATCH	37	3395632	DECAL - CANNON LARGE TS	65	9950357	WASHER - LOCK 1/4" SPLIT [4.EA]
10	3356052	BASE LATCH TAB	38	3991903	BAG ASSY - REAR ROD HOLDER TS	66	3392010	TELESCOPIC BOOM SS
11	9370010	SCREW - #4 x 1/2" PPH [2.EA]	39	0290796	>TUBE - ROD HOLDER	67	2219822	>BASE TUBE CLAMP
12	3320011	DEPTH COUNTER - 3 DIGIT (METRIC)	40	2151726	>WASHER - 5/16" FLAT	68	2219823	>MID TUBE CLAMP
13	3333010	GEAR - COUNTER, (METRIC)	41	2383106	>NUT - 5/16"-18 SS	69	2222825	>MID TUBE COLLET
14	0854654	COUNTER CUSHION/STOPPER [2.EA]	42	3319005	>CLAMP - ROD HOLDER w/ SLOT	70	2222826	>BASE TUBE COLLET
15	3397916	REEL ASSY - HIGH SPEED SS (METRIC)	43	3325002	>DISK - ROD HOLDER	71	3392001	▶BOOM BASE TUBE (SS)
16	3333011	>GEAR - REEL, UNI-TROLL (METRIC)	44	9040310	>BOLT - HEX 5/16"-18 x 2"	72	3392002	▶BOOM MID TUBE (SS)
17	3397902	▶REEL - ROUGH 3.75" SS	45	9430160	>WASHER - STAR 5/16"	73	3392003	▶BOOM END TUBE (SS)
18	1080001	SHAFT - REEL, UNI-TROLL	46	2200109	>OFFSHORE SALTWATER RELEASE	74	2998905	SWIVEL BASE
19	3393412	SCREW - SET 5/16"-18 x 1" (REEL)	47	3992300	SWIVEL HEAD ASSEMBLY	75	2249001	>KNOB - RELEASE PIN (LEXAN)
20	3775396	SPOOL CABLE SS [200.FT]	48	0267001	▶SIDE PLATE (RH)	76	2267001	>BASE PLATE (LEXAN)
21	9100070	CABLE LEADER SLEEVE	49	0267002	▶SIDE PLATE (LH)	77	2267002	>SWIVEL PLATE (LEXAN)
22	0467695	BRAKE PLATE - REEL	50	0269726	▶PULLY - SWIVEL HEAD	78	2267006	>INDEXING PLATE (TAPPED)
23	1264670	CLUTCH PAD	51	3397300	▶WASHER - .735 OD X .36 ID	79	2277001	>NUT - RETAINER RELEASE
24	0467694	BRAKE PLATE - RATCHET	52	9010070	▶HDW BEARING BRASS[2.EA]	80	2287002	>SPRING - RELEASE PIN
25	1000904	SHAFT - RATCHET - UNI-TROLL	53	2227820	BOOM END - TELESCOPIC (LEXAN)	81	2372100	>SCREW - #8 x 5/8" PPHMS [2.EA]
26	9010310	WASHER - THRUST [2.EA]	54	2372100	SCREW - #8 x 5/8" PPHMS	82	3392600	>RELEASE PIN
27	9010280	BEARING - THRUST	55	3307002	LOW PROFILE MOUNTING BASE (LEXAN)	83	9010004	>BEARING - SWIVEL BASE [2.EA]
28	9400040	SPRING - HAND CRANK	56	2994894	*BAG ASSEMBLY, MOUNTING (KIT #4)			

> PART OF ASSEMBLY

▶ ITEM CANNOT BE SOLD SEPARATELY

\* PARTS USED BUT NOT SHOWN