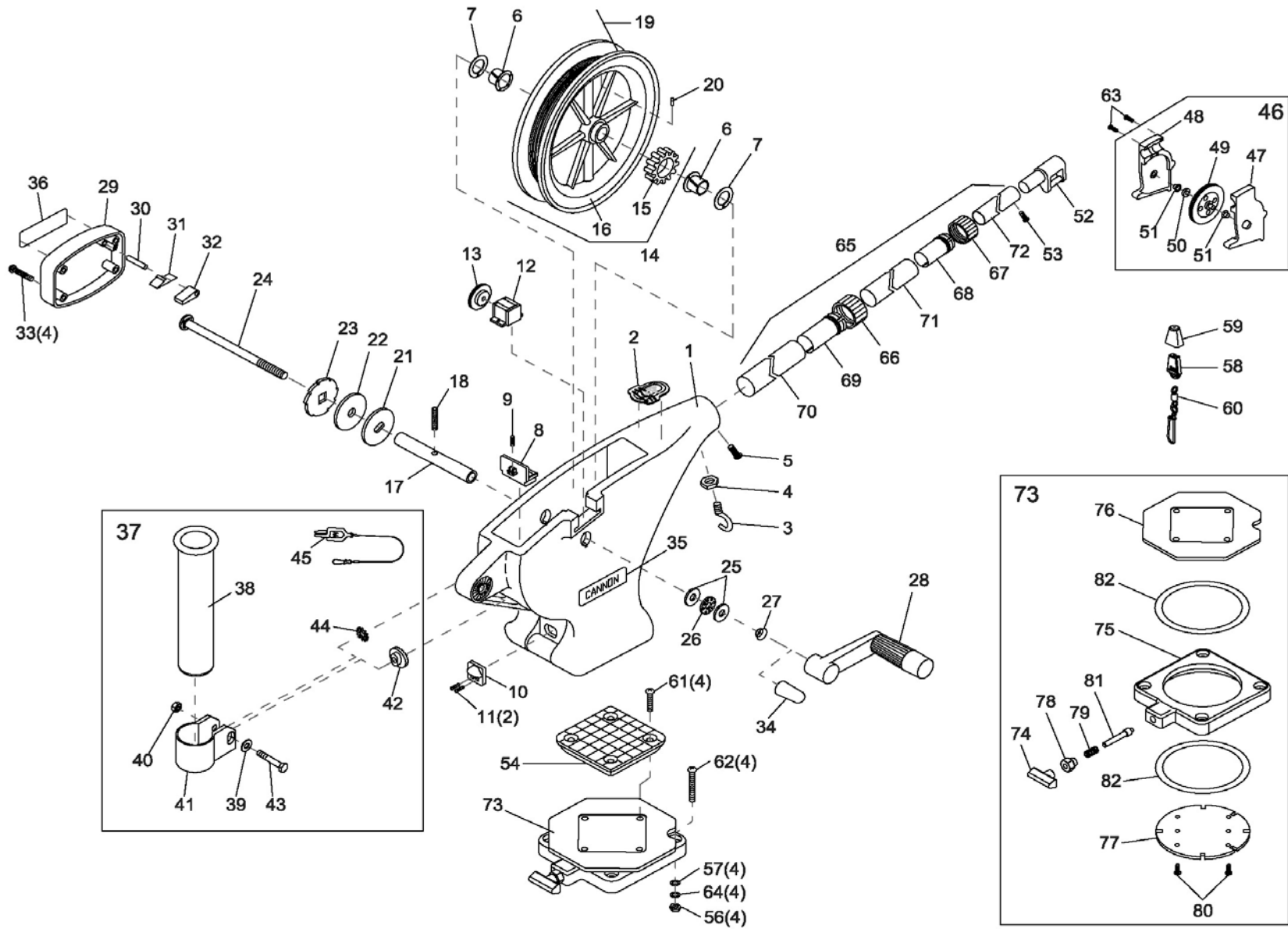




UNI-TROLL 10 TS™

for use with "AI" serial numbers



In the U.S.A., replacement parts may be ordered directly from CANNON Parts Dept., 121 Power Drive, Mankato, Minnesota 56001. In Canada, parts may be ordered from any of the Canadian Authorized Service Centers shown on the enclosed list. Be sure to provide the MODEL and SERIAL numbers of your downrigger when ordering parts. Please use the correct part numbers from the parts list. Payment for any parts ordered from the CANNON parts department, may be by cash, personal check, Discover Card, MasterCard or VISA. To order, call 1-800-227-6433 or FAX 1-800-527-4464.

1	3392506	FRAME - UNI-TROLL, WHITE	29	3390202	COVER - CLUTCH, ROUND, WHITE (LEXAN)	57	2371712	WASHER - 9/32" FLAT [4.EA]
2	3327004	DECAL - NOSE, UNI-TROLL	30	9250003	PIN - DOWEL 3/16" x 7/8" - RATCHET	58	9100100	TERMINATOR
3	9040040	HOOK - 1/4" - 20 ROLLED	31	9400070	SPRING - DOG RATCHET	59	9100101	TERMINATOR CUSHION
4	2263102	NUT - HEX 1/4"-20	32	9100160	DOG - RATCHET	60	9100620	TERMINATOR SNAP & SWIVEL
5	9280750	SCREW - 1/4" - 20 (RH) x 3/4" PPH	33	9370001	SCREW - #10 x 1-1/4" PPHSMS [4.EA]	61	9280713	BOLT - TRUSS 1/4" - 20 x 1-1/2" [4.EA]
6	9010001	BEARING - REEL SHAFT NYLINER [2.EA]	34	9100721	RED THREAD CAP	62	9280725	BOLT - TRUSS 1/4" - 20 x 2-1/2" [4.EA]
7	9430003	WASHER - 5/8" ID (NYLON) [2.EA]	35	3395632	DECAL - CANNON LARGE TS	63	9370010	SCREW - #4 x 1/2" PPH [3.EA]
8	3356050	BASE LATCH	36	3395633	DECAL - CANNON SMALL TS	64	9950357	WASHER - LOCK 1/4" SPLIT [4.EA]
9	9400050	SPRING - BASE LATCH	37	3991903	BAG ASSY - REAR ROD HOLDER TS	65	3392010	TELESCOPIC BOOM SS
10	3356052	BASE LATCH TAB	38	0290796	>TUBE - ROD HOLDER	66	2219822	>BASE TUBE CLAMP
11	9370010	SCREW - #4 x 1/2" PPH [2.EA]	39	2151726	>WASHER - 5/16" FLAT	67	2219823	>MID TUBE CLAMP
12	0220477	DEPTH COUNTER - 3 DIGIT	40	2383106	>NUT - 5/16"-18 SS	68	2222825	>MID TUBE COLLET
13	3333003	GEAR - COUNTER, UNI-TROLL	41	3319005	>CLAMP - ROD HOLDER w/ SLOT	69	2222826	>BASE TUBE COLLET
14	3397914	REEL ASSEMBLY - HIGH SPEED SS	42	3325002	>DISK - ROD HOLDER	70	3392001	▶BOOM BASE TUBE (SS)
15	3333004	>GEAR - REEL, UNI-TROLL	43	9040310	>BOLT - HEX 5/16"-18 x 2"	71	3392002	▶BOOM MID TUBE (SS)
16	3397901	▶REEL - ROUGH 5.75" SS	44	9430160	>WASHER - STAR 5/16"	72	3392003	▶BOOM END TUBE (SS)
17	1080001	SHAFT - REEL, UNI-TROLL	45	2200109	>OFFSHORE SALTWATER RELEASE	73	2998905	SWIVEL BASE
18	3393412	SCREW - SET 5/16"-18 x 1" (REEL)	46	3992300	SWIVEL HEAD ASSEMBLY	74	2249001	>KNOB - RELEASE PIN (LEXAN)
19	3775396	SPOOL CABLE SS [200.FT]	47	0267001	▶SIDE PLATE (RH)	75	2267001	>BASE PLATE (LEXAN)
20	9100070	CABLE LEADER SLEEVE	48	0267002	▶SIDE PLATE (LH)	76	2267002	>SWIVEL PLATE (LEXAN)
21	0467695	BRAKE PLATE - REEL	49	0269726	▶PULLY - SWIVEL HEAD	77	2267006	>INDEXING PLATE (TAPPED)
22	1264670	CLUTCH PAD	50	3397300	▶WASHER - .735 OD X .36 ID	78	2277001	>NUT - RETAINER RELEASE
23	0467694	BRAKE PLATE - RATCHET	51	9010070	▶HDW BEARING BRASS[2.EA]	79	2287002	>SPRING - RELEASE PIN
24	1000904	SHAFT - RATCHET - UNI-TROLL	52	2227820	BOOM END - TELESCOPIC (LEXAN)	80	2372100	>SCREW - #8 x 5/8" PPHMS [2.EA]
25	9010310	WASHER - THRUST [2.EA]	53	2372100	SCREW - #8 x 5/8" PPHMS	81	3392600	>RELEASE PIN
26	9010280	BEARING - THRUST	54	3307002	LOW PROFILE MOUNTING BASE (LEXAN)	82	9010004	>BEARING - SWIVEL BASE [2.EA]
27	9400040	SPRING - HAND CRANK	55	2994894	*BAG ASSEMBLY, MOUNTING (KIT #4)			
28	0902000	CRANK HANDLE - UNI-TROLL	56	2263102	NUT - HEX 1/4"-20 [4.EA]			

> PART OF ASSEMBLY

▶ ITEM CANNOT BE SOLD SEPARATELY

* PARTS USED BUT NOT SHOWN