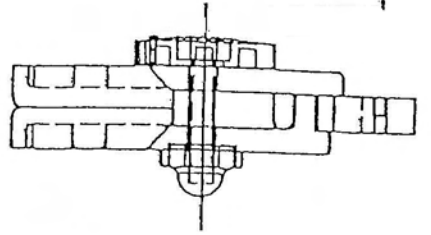
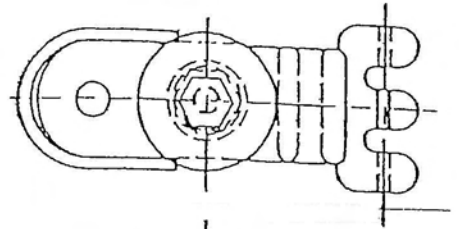


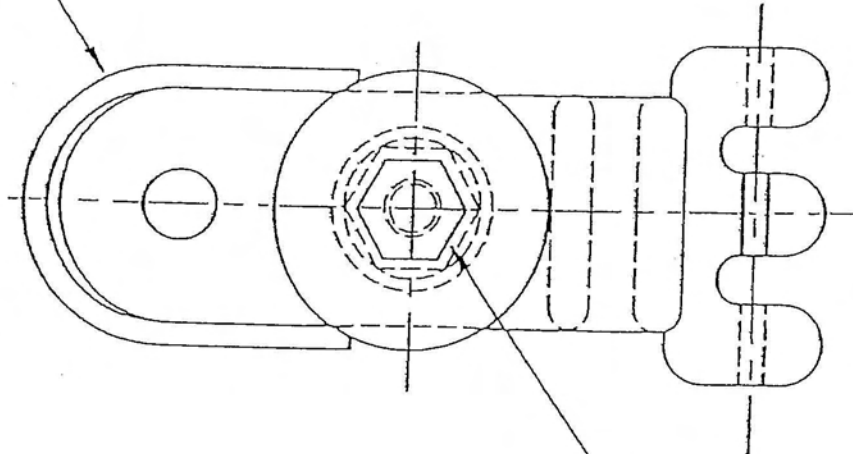
COMPONENTS OF ASSEMBLY NOT SHOWN:

- 1. 2218120 CARD - I.D. QUICK STACKER
- 2. 2208340 BLISTER - SMALL



ACTUAL SIZE

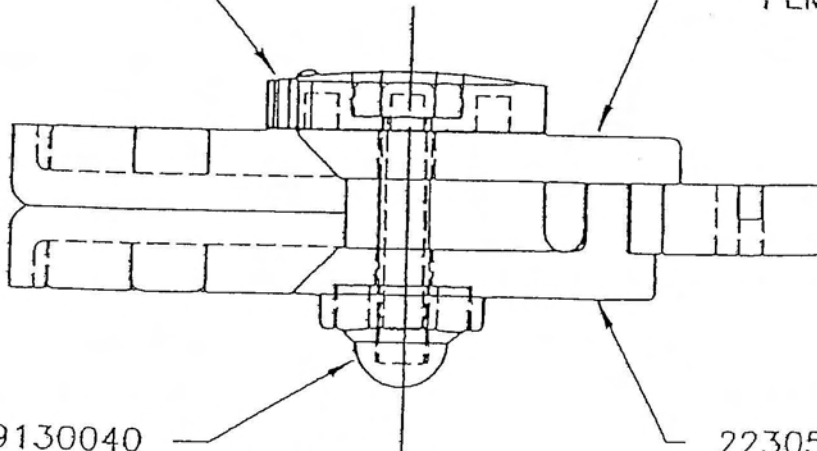
2264668
PAD - RELEASE



9040010
BOLT
#6-32 x 9/16 HEX HEAD

2249614
KNOB - THUMB

2230549
RELEASE
FEMALE HALF



9130040
NUT - #6-32 ACORN

2230547
RELEASE -
MALE HALF

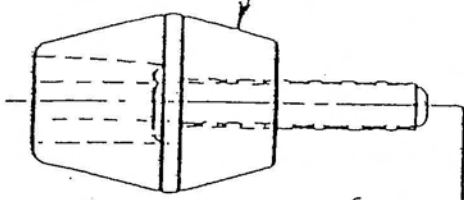
CHANGE	SYMBOL	A						
	WAS	REVISED & REDRAWN						
	EC.N.							

2200692
PLATE & POST ASS'Y.
C-2180-A (B1)

0224510
DECAL
C-2362 (B2)

2200679
LOCK PIN &
KNOB ASS'Y
SWIVEL BASE
C-2543-A (B3)

2250150
SCREW KIT
1/4-20x2"
(PKG OF 4) (B4)
C-2760-AK
(1 PKG. REQ'D.)

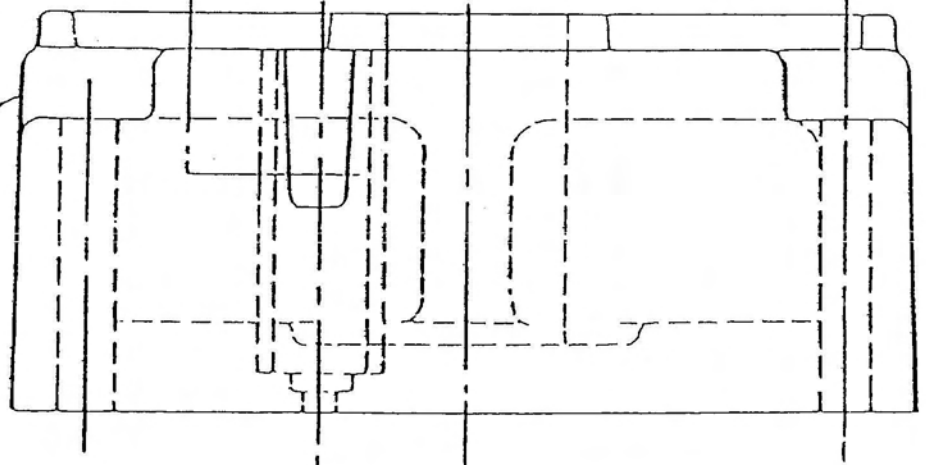


2266679 - Lock Pin

9400010
SPRING-LOCK PIN
C-2071 (B5)

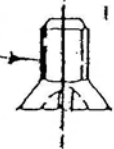
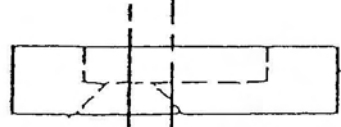
2200329
BASE ASS'Y.
SWIVEL (B6)
C-3014

(A)



9010460
CAP-POST STOP
SWIVEL BASE
C-2922 (B0)

9280280
SCREW 1/4-20 x 1/2
FLAT HD. (B7)
C-2542



JUL 24 1987